



# Entry 1 School Information

Created: 07/06/2017 • Last updated: 07/18/2017

Please be advised that you will need to complete this cover page (including signatures) before all of the other tasks assigned to you by your authorizer are visible on your task page. While completing this task, please ensure that you select the correct authorizer **(as of June 30, 2017)** or you may not be assigned the correct tasks.

**a. SCHOOL NAME AND BEDS#** NEW YORK FRENCH-AMERICAN CS (NYC CHANCELLOR)

(Select name from the drop down menu)

**b. CHARTER AUTHORIZER** NYCDOE-Authorized Charter School

(For technical reasons, please re-select authorizer name from the drop down menu).

**c. DISTRICT / CSD OF LOCATION** NYC CSD 3

## d1. SCHOOL INFORMATION

	PRIMARY ADDRESS	PHONE NUMBER	FAX NUMBER	EMAIL ADDRESS
	311 West 120th Street New York, NY 10027			

## d2. PHONE CONTACT NUMBER FOR AFTER HOURS EMERGENCIES

Contact Name	Marc Maurice
Title	Principal
Emergency Phone Number (###-###-####)	

**e. SCHOOL WEB ADDRESS (URL)** <http://www.nyfacs.net/>

**f. DATE OF INITIAL CHARTER** 07/2010

**g. DATE FIRST OPENED FOR INSTRUCTION** 07/2010

**h1. APPROVED SCHOOL MISSION (Regents, NYCDOE, and Buffalo BOE authorized schools only)**

MISSION STATEMENT

The mission of the bilingual/biliterate New York French-American Charter School is to develop global citizens who are well-prepared to assume leadership roles in a multicultural society.

**h2. KEY DESIGN ELEMENTS (Regents, NYCDOE, and Buffalo BOE authorized schools only)**

KEY DESIGN ELEMENTS (Brief description of Key design elements are those general aspects of the school that are innovative or unique to the school’s mission and goals, are core to the school’s overall design, and are critical to its success. The design elements may include a specific content area focus; unique student populations to be served; specific educational programs or pedagogical approaches; unique calendar, schedule, or configurations of students and staff; and/or innovative organizational structures and systems.

Variable 1	A fully developed French immersion program: The educational program will be a fully developed program involving both languages, with greater emphasis given to French in the early grades, a typical approach in effective French immersion programs. In a caring, nurturing environment designed to stimulate curiosity, promote creative thinking, and develop social and academic skills, the children will build a foundation for success, measured by French language proficiency, as well as mastering the required standards in English language arts and mathematics.
Variable 2	English and French as second or foreign languages. We will have ESL and FLE (French as a foreign language: Francais langue etrangere) Classes at all grade levels. As the school gets bigger, we will have two different levels of foreign or second language classes to better meet the needs of the students.
Variable 3	Supporting the success of all learners: In order to appropriately identify and urgently address student needs, with a particular focus on those who are at-risk of academic failure, have special needs or are English language learners, NYFACS utilizes a "Response to Intervention" (RTI) approach, according to the National Center on RTI, there are typically three levels of intensity in a tiered assessment or Response to Intervention Framework:  TIER 1: Universally screen all students for early identification, conduct general education progress monitoring TIER 2: Monitor at-risk students more frequently to evaluate

	the effectiveness of instructional changes TIER 3: Write individualized annual goals, conduct intensive progress monitoring, and document the effectiveness of interventions for those who need intensive instructional services."
Variable 4	Parent engagement and involvement: NYFACS works closely with parents and other caregivers to develop strong home/school partnerships. Teachers and leaders foster trusting and transparent relationships with parents and encourage the development of supportive learning environments in the home. In addition to frequent opportunities to volunteer during the school day, NYFACS has an active PTO and enjoys strong parent participation at conferences and special events.
Variable 5	(No response)
Variable 6	(No response)
Variable 7	(No response)
Variable 8	(No response)
Variable 9	(No response)
Variable 10	(No response)

**i. TOTAL ENROLLMENT ON JUNE 30, 2017** 256

**j. GRADES SERVED IN SCHOOL YEAR 2016-17**

Check all that apply

Grades Served	K, 1, 2, 3, 4, 5
---------------	------------------

**k1. DOES THE SCHOOL CONTRACT WITH A CHARTER OR EDUCATIONAL MANAGEMENT ORGANIZATION?** No

## **l1. FACILITIES**

Does the school maintain or operate multiple sites?

	No, just one site.
--	--------------------

12. SCHOOL SITES

Please list the sites where the school will operate for the upcoming school year.

	Physical Address	Phone Number	District/CSD	Grades Served at Site	School at Full Capacity at Site	Facilities Agreement
Site 1 (same as primary site)	311 West 120th Street New York, NY 10027		CSD 3	K-5	Yes	Rent/Lease
Site 2						
Site 3						

12a. Please provide the contact information for Site 1.

	Name	Work Phone	Alternate Phone	Email Address
School Leader	Marc Maurice			
Operational Leader	Mamadou Ba			
Compliance Contact	Marc Maurice			
Complaint Contact	Marc Maurice			

m1. Is the school or are the school sites co-located? No

n1. Were there any revisions to the school’s charter during the 2016-17 school year? (Please include approved or pending material and non-material charter revisions). Yes



## n2. Summary of Charter Revisions

	Category (Select Best Description)	Specific Revision (150 word limit)	Date Approved by BOT (if applicable)	Date Approved by Authorizer (if applicable)
1	Other	An amendment was made to the charter so children of our teaching staff, may attend our school without paying tuition if they do not reside in our district or state. The change was necessitated because we could not afford to lose one of our stellar teachers who comes to us from New Jersey. The amendment was made after consultation and approval by our authorizer.		06/24/2016
2				
3				
4				
5				

**o. Name and Position of Individual(s) Who Completed the 2016-17 Annual Report.** Marc Maurice (Principal)

**p. Our signatures below attest that all of the information contained herein is truthful and accurate and that this charter school is in compliance with all aspects of its charter, and with all pertinent Federal, State, and local laws, regulations, and rules. We understand that if any information in any part of this report is found to have been deliberately misrepresented, that will constitute grounds for the revocation of our charter. Check **YES** if you agree and then use the mouse on your PC or the stylist on your mobile device to sign your name).**

Yes

**Signature, Head of Charter School**

A handwritten signature in black ink, consisting of several overlapping loops and a long horizontal stroke extending to the right.

**Signature, President of the Board of Trustees**

**Date** 2017/07/18

**Thank you.**



# Entry 2 NYS School Report Card Link

Created: 07/12/2017 • Last updated: 07/25/2017

---

## **1. NEW YORK STATE REPORT CARD**

<http://schools.nyc.gov/community/charters/information/doeauthorizedschools.htm>

**Provide a direct URL or web link  
to the most recent New York  
State School Report Card for the  
charter school (See  
<https://reportcards.nysed.gov/>).**

(Charter schools completing year one  
will not yet have a School Report Card or  
link to one. Please type "URL is not  
available" in the space provided).



# Entry 3 Progress Toward Goals

Created: 07/18/2017 • Last updated: 08/01/2017

---

## PROGRESS TOWARD CHARTER GOALS

The following tables reflect formatting in the online portal required for Board of Regents-authorized charter schools and NYCDOE-authorized charter schools only. Schools should list Progress Toward Charter Goals by August 1, 2017. If the goals are based on student performance data that the school will not have access to before August 1, 2017 (e.g., the NYS Assessment results), please state this in the last column. The information can be updated when available. Please complete and submit no later than November 1, 2017.

## 1. ACADEMIC STUDENT PERFORMANCE GOALS

## 2016-17 Progress Toward Attainment of Academic Goals

	Academic Student Performance Goal	Measure Used to Evaluate Progress Toward Attainment of Goal	Goal - Met or Not Met	If Not Met, Describe Efforts School Will Take
Academic Goal 1				Waiting for the 2016-2017 Student Data.
Academic Goal 2				
Academic Goal 3				
Academic Goal 4				
Academic Goal 5				
Academic Goal 6				
Academic Goal 7				
Academic Goal 8				

**2. Do have more academic goals to add?** (No response)

## 2016-17 Progress Toward Attainment of Academic Goals

	Academic Student Performance Goal	Measure Used to Evaluate Progress Toward Attainment of Goal	Goal - Met or Not Met	If Not Met, Describe Efforts School Will Take
Academic Goal 9				
Academic Goal 10				
Academic Goal 11				
Academic Goal 12				
Academic Goal 13				
Academic Goal 14				
Academic Goal 15				
Academic Goal 16				

**3. Do have more academic goals (No response) to add?**

## 2016-17 Progress Toward Attainment of Academic Goals

	Academic Student Performance Goal	Measure Used to Evaluate Progress Toward Attainment of Goal	Goal - Met, Partially Met, or Not Met	If Not Met, Describe Efforts School Will Take
Academic Goal 17				

Academ ic Goal 18				
Academ ic Goal 19				
Academ ic Goal 20				
Academ ic Goal 21				
Academ ic Goal 22				
Academ ic Goal 23				
Academ ic Goal 24				
Academ ic Goal 25				
Academ ic Goal 26				
Academ ic Goal 27				
Academ ic Goal 28				
Academ ic Goal 29				
Academ ic Goal 30				

#### 4. ORGANIZATIONAL GOALS

2016-17 Progress Toward Attainment of Organizational Goals

	Organizational Goal	Measure Used to Evaluate Progress	Goal - Met or Not Met	If Not Met, Describe Efforts School Will Take
Org Goal 1				
Org Goal 2				
Org Goal 3				
Org Goal 4				
Org Goal 5				

5. Do you have more (No response)  
organizational goals to add?

2016-17 Progress Toward Attainment of Organizational Goals

	Organizational Goal	Measure Used to Evaluate Progress	Goal - Met or Not Met	If Not Met, Describe Efforts School Will Take
Org Goal 6				
Org Goal 7				
Org Goal 8				
Org Goal 9				
Org Goal 10				
Org Goal 11				
Org Goal 12				
Org Goal 13				
Org Goal 14				
Org Goal 15				

6. FINANCIAL GOALS



2016-17 Progress Toward Attainment of Financial Goals

	Financial Goals	Measure Used to Evaluate Progress	Goal - Met or Not Met	If Not Met, Describe Efforts School Will Take
Financial Goal 1				
Financial Goal 2				
Financial Goal 3				
Financial Goal 4				
Financial Goal 5				



# Entry 4 Expenditures per Child

Created: 07/06/2017 • Last updated: 08/01/2017

## Financial Information

This information is required of ALL charter schools. Provide the following measures of fiscal performance of the charter school in Appendix B (Total Expenditures and Administrative Expenditures Per Child):

### 1. Total Expenditures Per Child

To calculate '**Total Expenditures per Child**' take total expenditures (from the unaudited 2016-17 Schedule of Functional Expenses) and divide by the year end FTE student enrollment. (Integers Only. No dollar signs or commas).

**Note:** The information on the Schedule of Functional Expenses on pages 41-43 of the Audit Guide can help schools locate the amounts to use in the two per pupil calculations: <http://www.p12.nysed.gov/psc/AuditGuide.html>

Line 1: Total Expenditures	4153546
Line 2: Year End FTE student enrollment	256
Line 3: Divide Line 1 by Line 2	16225

## 2. Administrative Expenditures per Child

To calculate **'Administrative Expenditures per Child'** To calculate "Administrative Expenditures per Child" first *add* together the following:

1. Take the relevant portion from the 'personnel services cost' row and the 'management and general' column (from the unaudited 2016-17 Schedule of Functional Expenses)
2. Any contracted administrative/management fee paid to other organizations or corporations
3. Take the total from above and divide it by the year-end FTE enrollment. The relevant portion that must be included in this calculation is defined as follows:

Administrative Expenditures: Administration and management of the charter school includes the activities and personnel of the offices of the chief school officer, the finance or business offices, school operations personnel, data management and reporting, human resources, technology, etc. It also includes those administrative and management services provided by other organizations or corporations on behalf of the charter school for which the charter school pays a fee or other compensation. Do not include the FTE of personnel whose role is to directly support the instructional program.

**Notes:**  
***The information on the Schedule of Functional Expenses on pages 41-43 of the Audit Guide can help schools locate the amounts to use in the two per pupil calculations:***  
***<http://www.p12.nysed.gov/psc/AuditGuide.html>.***  
**Employee benefit costs or expenditures should not be reported in the above calculations.**

Line 1: Relevant Personnel Services Cost (Row)	437658
Line 2: Management and General Cost (Column)	381147
Line 3: Sum of Line 1 and Line 2	818805
Line 5: Divide Line 3 by the Year End FTE student enrollment	3198

***Thank you.***

# New York State Education Department

## Request for Proposals to Establish Charter Schools Authorized by the - Board of Regents -

### **2017-18 Budget & Cash Flow Template**

#### **General Instructions and Notes for New Application Budgets and Cash Flows Templates**

<b>1</b>	Complete ALL SIX columns in <b>BLUE</b>
<b>2</b>	Enter information into the <b>GRAY</b> cells
<b>3</b>	Cells containing <b>RED</b> triangles in the upper right corner in columns B through G contain guidance on that particular item
<b>4</b>	School district per-pupil tuition information is located on the State Aid website at <a href="https://stateaid.nysed.gov/charter/">https://stateaid.nysed.gov/charter/</a> . Rows may be inserted in the worksheet to accomodate additional districts if necessary.
<b>5</b>	The Assumptions column should be completed for all revenue and expense items unless the item is self-explanatory. Where applicable, please reference the page number or section in the application narrative that indicates the assumption being made. For instance, student enrollment would reference the applicable page number in Section I, C of the application narrative.

**New York French American Charter School -**

**PROJECTED BUDGET FOR 2017-2018 -**

**July 1, 2017 to June 30, 2018 -**

Please Note: The student enrollment data is entered below in the Enrollment Section beginning in row 155. This will populate the data in row 10.

	REGULAR EDUCATION	SPECIAL EDUCATION	OTHER	FUNDRAISING	MANAGEMENT & GENERAL	TOTAL
Total Revenue	3,172,501	704,927	-	38,095	342,854	4,258,377
Total Expenses	3,199,780	679,688	-	25,158	342,854	4,247,481
Net Income	(27,279)	25,238	-	12,937	(0)	10,896
Actual Student Enrollment	260	10				-
Total Paid Student Enrollment	260	10				270

**PROGRAM SERVICES**

**SUPPORT SERVICES**

REGULAR EDUCATION	SPECIAL EDUCATION	OTHER	FUNDRAISING	MANAGEMENT & GENERAL	TOTAL
----------------------	----------------------	-------	-------------	-------------------------	-------

**REVENUE**

**REVENUES FROM STATE SOURCES**

Per Pupil Revenue

CY Per Pupil Rate

District of Location

\$14,527.00

School District 2 (Enter Name)

School District 3 (Enter Name)

School District 4 (Enter Name)

School District 5 (Enter Name)

3,021,616	672,092	-	37,770	339,932	4,071,410
-	-	-	-	-	-
-	-	-	-	-	-
-	-	-	-	-	-
-	-	-	-	-	-
3,021,616	672,092	-	37,770	339,932	4,071,410

Special Education Revenue

Grants

Stimulus

Other

Other State Revenue

-	-	-	-	-	-
20,313	1,766	-	-	-	22,079
-	-	-	-	-	-
-	-	-	-	-	-

**TOTAL REVENUE FROM STATE SOURCES**

3,041,929	673,858	-	37,770	339,932	4,093,489
-----------	---------	---	--------	---------	-----------

**REVENUE FROM FEDERAL FUNDING**

IDEA Special Needs

Title I

Title Funding - Other

School Food Service (Free Lunch)

Grants

Charter School Program (CSP) Planning & Implementation

Other

Other Federal Revenue

-	18,726	-	-	-	18,726
74,427	6,472	-	-	-	80,899
6,250	543	-	-	-	6,793
-	-	-	-	-	-

-	-	-	-	-	-
-	-	-	-	-	-

**TOTAL REVENUE FROM FEDERAL SOURCES**

80,677	25,741	-	-	-	106,418
--------	--------	---	---	---	---------

**LOCAL and OTHER REVENUE**

Contributions and Donations, Fundraising

Erate Reimbursement

Interest Income, Earnings on Investments,

NYC-DYCD (Department of Youth and Community Developmt.)

Food Service (Income from meals)

Text Book

Other Local Revenue

23,920	2,080	-	-	-	26,000
25,976	3,247	-	325	2,922	32,470
-	-	-	-	-	-
-	-	-	-	-	-
-	-	-	-	-	-
-	-	-	-	-	-
-	-	-	-	-	-

**TOTAL REVENUE FROM LOCAL and OTHER SOURCES**

49,896	5,327	-	325	2,922	58,470
--------	-------	---	-----	-------	--------

**TOTAL REVENUE**

3,172,501	704,927	-	38,095	342,854	4,258,377
-----------	---------	---	--------	---------	-----------

**EXPENSES**

**ADMINISTRATIVE STAFF PERSONNEL COSTS**

No. of Positions

Executive Management

Instructional Management

Deans, Directors & Coordinators

-
2.00
-

-	-	-	-	-	-
138,022	34,505	-	2,300	55,209	230,036
51,828	6,479	-	-	6,479	64,785

**New York French American Charter School**

**PROJECTED BUDGET FOR 2017-2018**

**July 1, 2017 to June 30, 2018**

Please Note: The student enrollment data is entered below in the Enrollment Section beginning in row 155. This will populate the data in row 10.

	REGULAR EDUCATION	SPECIAL EDUCATION	OTHER	FUNDRAISING	MANAGEMENT & GENERAL	TOTAL
Total Revenue	3,172,501	704,927	-	38,095	342,854	4,258,377
Total Expenses	3,199,780	679,688	-	25,158	342,854	4,247,481
Net Income	(27,279)	25,238	-	12,937	(0)	10,896
Actual Student Enrollment	260	10				-
Total Paid Student Enrollment	260	10				270

		PROGRAM SERVICES			SUPPORT SERVICES		
		REGULAR EDUCATION	SPECIAL EDUCATION	OTHER	FUNDRAISING	MANAGEMENT & GENERAL	TOTAL
CFO / Director of Finance	-	-	-	-	-	-	-
Operation / Business Manager	1.00	3,121	780	-	3,902	70,227	78,030
Administrative Staff	3.00	121,294	15,162	-	-	15,162	151,618
<b>TOTAL ADMINISTRATIVE STAFF</b>	<b>6</b>	<b>314,266</b>	<b>56,926</b>		<b>6,202</b>	<b>147,076</b>	<b>524,470</b>
<b>INSTRUCTIONAL PERSONNEL COSTS</b>							
Teachers - Regular	15.00	1,010,144	87,839	-	-	-	1,097,983
Teachers - SPED	3.00		234,050	-	-	-	234,050
Substitute Teachers	-	9,200	800	-	-	-	10,000
Teaching Assistants	3.00	112,578	9,789	-	-	-	122,367
Specialty Teachers	4.00	164,739	14,325	-	-	-	179,064
Aides	-	-	-	-	-	-	-
Therapists & Counselors	-	-	-	-	-	-	-
Other	-	55,867	4,858	-	-	-	60,725
<b>TOTAL INSTRUCTIONAL</b>	<b>25</b>	<b>1,352,528</b>	<b>351,661</b>				<b>1,704,189</b>
<b>NON-INSTRUCTIONAL PERSONNEL COSTS</b>							
Nurse	-	-	-	-	-	-	-
Librarian	-	-	-	-	-	-	-
Custodian	-	-	-	-	-	-	-
Security	-	-	-	-	-	-	-
Other	-	27,324	2,376	-	-	-	29,700
<b>TOTAL NON-INSTRUCTIONAL</b>		<b>27,324</b>	<b>2,376</b>				<b>29,700</b>
<b>SUBTOTAL PERSONNEL SERVICE COSTS</b>	<b>31</b>	<b>1,694,118</b>	<b>410,963</b>		<b>6,202</b>	<b>147,076</b>	<b>2,258,359</b>
<b>PAYROLL TAXES AND BENEFITS</b>							
Payroll Taxes		127,845	32,825	-	35	12,059	172,764
Fringe / Employee Benefits		218,602	56,128	-	59	20,619	295,408
Retirement / Pension		25,900	6,650	-	7	2,443	35,000
<b>TOTAL PAYROLL TAXES AND BENEFITS</b>		<b>372,347</b>	<b>95,603</b>		<b>101</b>	<b>35,121</b>	<b>503,172</b>
<b>TOTAL PERSONNEL SERVICE COSTS</b>		<b>2,066,465</b>	<b>506,566</b>		<b>6,302</b>	<b>182,197</b>	<b>2,761,531</b>
<b>CONTRACTED SERVICES</b>							
Accounting / Audit		2,449	272	-	-	24,493	27,214
Legal		2,575	286	-	-	25,746	28,607
Management Company Fee		-	-	-	-	-	-
Nurse Services		-	-	-	-	-	-
Food Service / School Lunch		-	-	-	-	-	-
Payroll Services		10,165	2,610		3	959	13,736
Special Ed Services							-
Titlment Services (i.e. Title I)							-
Other Purchased / Professional / Consulting		134,331	34,490		36	12,671	181,528
<b>TOTAL CONTRACTED SERVICES</b>		<b>149,519</b>	<b>37,658</b>		<b>39</b>	<b>63,868</b>	<b>251,085</b>

**SCHOOL OPERATIONS**

**New York French American Charter School**

**PROJECTED BUDGET FOR 2017-2018**

**July 1, 2017 to June 30, 2018**

Please Note: The student enrollment data is entered below in the Enrollment Section beginning in row 155. This will populate the data in row 10.

	REGULAR EDUCATION	SPECIAL EDUCATION	OTHER	FUNDRAISING	MANAGEMENT & GENERAL	TOTAL
Total Revenue	3,172,501	704,927	-	38,095	342,854	4,258,377
Total Expenses	3,199,780	679,688	-	25,158	342,854	4,247,481
Net Income	(27,279)	25,238	-	12,937	(0)	10,896
Actual Student Enrollment	260	10				-
Total Paid Student Enrollment	260	10				270

	PROGRAM SERVICES			SUPPORT SERVICES		
	REGULAR EDUCATION	SPECIAL EDUCATION	OTHER	FUNDRAISING	MANAGEMENT & GENERAL	TOTAL
Board Expenses						-
Classroom / Teaching Supplies & Materials	23,000	2,000				25,000
Special Ed Supplies & Materials	-	-				-
Textbooks / Workbooks	57,113	4,966				62,079
Supplies & Materials other	1,840	160				2,000
Equipment / Furniture						-
Telephone	4,555	1,169		1	430	6,155
Technology	22,295	5,725		6	2,103	30,129
Student Testing & Assessment	4,600	400				5,000
Field Trips	4,600	400				5,000
Transportation (student)						-
Student Services - other	9,200	800				10,000
Office Expense	-			3,477	31,297	34,774
Staff Development	11,040	960			-	12,000
Staff Recruitment	6,440	560			-	7,000
Student Recruitment / Marketing	9,200	800				10,000
School Meals / Lunch	4,600	400				5,000
Travel (Staff)					2,000	2,000
Fundraising	-			10,000		10,000
Other	-				6,500	6,500
<b>TOTAL SCHOOL OPERATIONS</b>	<b>158,483</b>	<b>18,340</b>		<b>13,485</b>	<b>42,329</b>	<b>232,637</b>
<b>FACILITY OPERATION &amp; MAINTENANCE</b>						
Insurance	46,197	11,862		12	4,358	62,429
Janitorial	85,121	21,856		23	8,029	115,029
Building and Land Rent / Lease	471,210	26,178		5,236	20,943	523,567
Repairs & Maintenance	14,800	3,800		4	1,396	20,000
Equipment / Furniture						-
Security	24,356	6,281		7	2,413	33,057
Utilities	76,876	19,738		21	7,251	103,886
<b>TOTAL FACILITY OPERATION &amp; MAINTENANCE</b>	<b>718,561</b>	<b>89,715</b>		<b>5,303</b>	<b>44,390</b>	<b>857,968</b>
<b>DEPRECIATION &amp; AMORTIZATION</b>	<b>106,752</b>	<b>27,409</b>	<b>-</b>	<b>29</b>	<b>10,069</b>	<b>144,260</b>
<b>DISSOLUTION ESCROW &amp; RESERVES / CONTINGENCY</b>	<b>-</b>	<b>-</b>	<b>-</b>	<b>-</b>	<b>-</b>	<b>-</b>
<b>TOTAL EXPENSES</b>	<b>3,199,780</b>	<b>679,688</b>		<b>25,158</b>	<b>342,854</b>	<b>4,247,481</b>
<b>NET INCOME</b>	<b>(27,279)</b>	<b>25,238</b>	<b>-</b>	<b>12,937</b>	<b>(0)</b>	<b>10,896</b>

**ENROLLMENT - \*School Districts Are Linked To Above Entries\***

	REGULAR EDUCATION	SPECIAL EDUCATION	TOTAL ENROLLED
District of Location			-
School District 2 (Enter Name)			-
School District 3 (Enter Name)			-
School District 4 (Enter Name)			-
School District 5 (Enter Name)			-

**New York French American Charter School**

**PROJECTED BUDGET FOR 2017-2018**

**July 1, 2017 to June 30, 2018**

Please Note: The student enrollment data is entered below in the Enrollment Section beginning in row 155. This will populate the data in row 10.

	REGULAR EDUCATION	SPECIAL EDUCATION	OTHER	FUNDRAISING	MANAGEMENT & GENERAL	TOTAL
Total Revenue	3,172,501	704,927	-	38,095	342,854	4,258,377
Total Expenses	3,199,780	679,688	-	25,158	342,854	4,247,481
Net Income	(27,279)	25,238	-	12,937	(0)	10,896
Actual Student Enrollment	260	10				-
Total Paid Student Enrollment	260	10				270

**PROGRAM SERVICES**

**SUPPORT SERVICES**

	REGULAR EDUCATION	SPECIAL EDUCATION	OTHER	FUNDRAISING	MANAGEMENT & GENERAL	TOTAL
TOTAL ENROLLMENT						
REVENUE PER PUPIL	-	-	-			
EXPENSES PER PUPIL	-	-	-			









[illegible]

Pupil		242	18		
		Program Regular Ed	Program SPED	Fundraising	Management
Allocations:					
Pupil Allocation		92.00%	8.00%		
Payroll Allocation		74.00%	19.00%	0.02%	6.98%
Indirect Allocation					

<p align="center"><b>Disclosure of Financial Interest by a Current or Proposed Charter School Education Corporation Trustee</b></p>
---

**Trustee Name:**

ZOHAR GHENANIA

**Name of Charter School Education Corporation (for an unmerged school, this is the Charter School Name):**

NEW YORK FRENCH AMERICAN SCHOOL

1. List all positions held on the education corporation board (e.g., president, treasurer, parent representative).

2. Is the trustee an employee of any school operated by the Education Corporation?  
☒ **Yes** ☐ **No**

If **Yes**, for each school, please provide a description of the position(s) you hold, your responsibilities, your salary and your start date.

LYCEE FRANCAIS de NEW YORK, TEACHER  
 START DATE: 09/2006

3. Is the trustee an employee or agent of the management company or institutional partner of the charter school(s) governed by the Education Corporation?  
☐ **Yes** ☐ **No**

If **Yes**, for each school, please provide a description of the position(s) you hold, your responsibilities, your salary and your start date.

4. Identify each interest/transaction (and provide the requested information) that you or any of your immediate family members or any persons who live with you in your house have held or engaged in with the charter school(s) governed by the Education Corporation during the time you have served on the board, and in the six-month period prior to such service. If there has been no such financial interest or transaction, write **None**. Please note that if you answered **Yes** to Questions 2-4 above, you need not disclose again your employment status, salary, etc.

Date(s)	Nature of Financial Interest/Transaction	Steps taken to avoid a conflict of interest, (e.g., did not vote, did not participate in discussion)	Name of person holding interest or engaging in transaction and relationship to yourself

Please write "None" if applicable. Do not leave this space blank.			
---	--	--	--

5. Identify each individual, business, corporation, union association, firm, partnership, committee proprietorship, franchise holding company, joint stock company, business or real estate trust, non-profit organization, or other organization or group of people doing business with the school(s) governed by the Education Corporation **and** in which such entity, during the time of your tenure as a trustee, you and/or your immediate family member(s) or person(s) living in your house had a financial interest or other relationship. If you are a member, director, officer or employee of an organization formally partnered with the school(s) that is/are doing business with the school(s) through a management or services agreement, please identify only the name of the organization, your position in the organization, and the relationship between such organization and the school(s). If there was no financial interest, write **None**.

Organization conducting business with the school(s)	Nature of business conducted	Approximate value of the business conducted	Name of Trustee and/or immediate family member of household holding an interest in the organization conducting business with the school(s) and the nature of the interest	Steps Taken to Avoid Conflict of Interest
Please write "None" if applicable. Do not leave this space blank.				
LFNY	DONATIONS OF TIME and MATERIAL		MYSELF	


07/11/2017

---

Signature Date

Please note that this document is considered a public record and as such, may be made available to members of the public upon request under the Freedom of Information Law. Personal contact information provided below will be redacted.

Business Telephone: \_\_\_\_\_

Business Address: \_\_\_\_\_

E-mail Address: \_\_\_\_\_

Home Telephone: \_\_\_\_\_

Home Address: \_\_\_\_\_



<p align="center"><b>Disclosure of Financial Interest by a Current or Proposed Charter School Education Corporation Trustee</b></p>
---

**Trustee Name:**

Mason Mallory

**Name of Charter School Education Corporation (for an unmerged school, this is the Charter School Name):**

New York French-American Charter School

1. List all positions held on the education corporation board (e.g., president, treasurer, parent representative). vice chair

2. Is the trustee an employee of any school operated by the Education Corporation?  
 \_\_\_ Yes X No

If **Yes**, for each school, please provide a description of the position(s) you hold, your responsibilities, your salary and your start date.

3. Is the trustee an employee or agent of the management company or institutional partner of the charter school(s) governed by the Education Corporation?  
 \_\_\_ Yes X No

If **Yes**, for each school, please provide a description of the position(s) you hold, your responsibilities, your salary and your start date.

4. Identify each interest/transaction (and provide the requested information) that you or any of your immediate family members or any persons who live with you in your house have held or engaged in with the charter school(s) governed by the Education Corporation during the time you have served on the board, and in the six-month period prior to such service. If there has been no such financial interest or transaction, write **None**. Please note that if you answered **Yes** to Questions 2-4 above, you need not disclose again your employment status, salary, etc.

Date(s)	Nature of Financial Interest/Transaction	Steps taken to avoid a conflict of interest, (e.g., did not vote, did not participate in discussion)	Name of person holding interest or engaging in transaction and relationship to yourself



<i>Please write "None" if applicable. Do not leave this space blank.</i> None			
--	--	--	--

5. Identify each individual, business, corporation, union association, firm, partnership, committee proprietorship, franchise holding company, joint stock company, business or real estate trust, non-profit organization, or other organization or group of people doing business with the school(s) governed by the Education Corporation and in which such entity, during the time of your tenure as a trustee, you and/or your immediate family member(s) or person(s) living in your house had a financial interest or other relationship. If you are a member, director, officer or employee of an organization formally partnered with the school(s) that is/are doing business with the school(s) through a management or services agreement, please identify only the name of the organization, your position in the organization, and the relationship between such organization and the school(s). If there was no financial interest, write **None**.

Organization conducting business with the school(s)	Nature of business conducted	Approximate value of the business conducted	Name of Trustee and/or immediate family member of household holding an interest in the organization conducting business with the school(s) and the nature of the interest	Steps Taken to Avoid Conflict of Interest
<i>Please write "None" if applicable. Do not leave this space blank.</i> None				

Signature Mary Malloy Date 7/11/2017

*Please note that this document is considered a public record and as such, may be made available to members of the public upon request under the Freedom of Information Law. Personal contact information provided below will be redacted.*

Business Telephone: \_\_\_\_\_

Business Address: \_\_\_\_\_

E-mail Address: \_\_\_\_\_

Home Telephone: \_\_\_\_\_

Home Address: \_\_\_\_\_

**Disclosure of Financial Interest by a Current or Proposed Charter School  
Education Corporation Trustee**

Trustee Name:

Carine Pena

Name of Charter School Education Corporation (for an unmerged school, this is the Charter School Name):

NYFACS - New York French American charter School

1. List all positions held on the education corporation board (e.g., president, treasurer, parent representative).

2. Is the trustee an employee of any school operated by the Education Corporation?  
     Yes ✓ No

If **Yes**, for each school, please provide a description of the position(s) you hold, your responsibilities, your salary and your start date.

3. Is the trustee an employee or agent of the management company or institutional partner of the charter school(s) governed by the Education Corporation?

     Yes ✓ No

If **Yes**, for each school, please provide a description of the position(s) you hold, your responsibilities, your salary and your start date.

4. Identify each interest/transaction (and provide the requested information) that you or any of your immediate family members or any persons who live with you in your house have held or engaged in with the charter school(s) governed by the Education Corporation during the time you have served on the board, and in the six-month period prior to such service. If there has been no such financial interest or transaction, write **None**. Please note that if you answered **Yes** to Questions 2-4 above, you need not disclose again your employment status, salary, etc.

Date(s)	Nature of Financial Interest/Transaction	Steps taken to avoid a conflict of interest, (e.g., did not vote, did not participate in discussion)	Name of person holding interest or engaging in transaction and relationship to yourself
<u>None</u>			

Please write "None" if applicable. Do not leave this space blank.	None	
---	------	--

5. Identify each individual, business, corporation, union association, firm, partnership, committee proprietorship, franchise holding company, joint stock company, business or real estate trust, non-profit organization, or other organization or group of people doing business with the school(s) governed by the Education Corporation and in which such entity, during the time of your tenure as a trustee, you and/or your immediate family member(s) or person(s) living in your house had a financial interest or other relationship. If you are a member, director, officer or employee of an organization formally partnered with the school(s) that is/are doing business with the school(s) through a management or services agreement, please identify only the name of the organization, your position in the organization, and the relationship between such organization and the school(s). If there was no financial interest, write **None**.

Organization conducting business with the school(s)	Nature of business conducted	Approximate value of the business conducted	Name of Trustee and/or immediate family member of household holding an interest in the organization conducting business with the school(s) and the nature of the interest	Steps Taken to Avoid Conflict of Interest
Please write "None" if applicable. Do not leave this space blank.				
		None		

Signature

Date

Please note that this document is considered a public record and as such, may be made available to members of the public upon request under the Freedom of Information Law. Personal contact information provided below will be redacted.

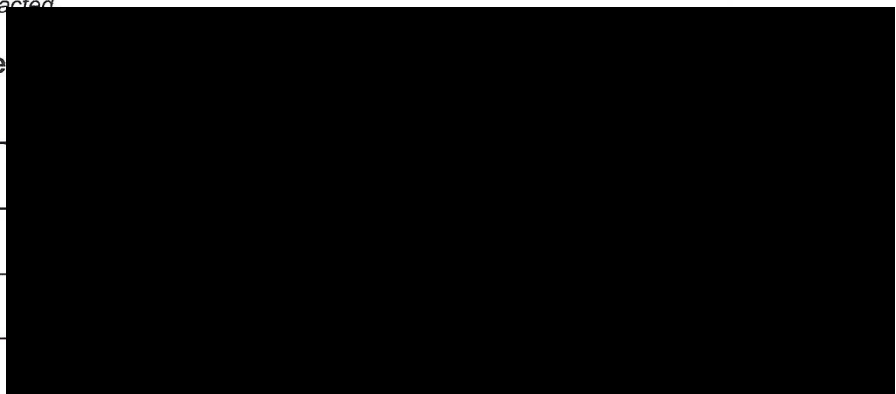
Business Telephone: \_\_\_\_\_

Business Address: \_\_\_\_\_

E-mail Address: \_\_\_\_\_

Home Telephone: \_\_\_\_\_

Home Address: \_\_\_\_\_





**Disclosure of Financial Interest by a Current or Proposed Charter School  
Education Corporation Trustee**

**Trustee Name:**

Dionne Beckford

**Name of Charter School Education Corporation (for an unmerged school, this is the Charter School Name):**

New York French American Charter School

1. List all positions held on the education corporation board (e.g., president, treasurer, parent representative). Board Secretary

2. Is the trustee an employee of any school operated by the Education Corporation?  
     Yes ✓ No

If **Yes**, for each school, please provide a description of the position(s) you hold, your responsibilities, your salary and your start date.

3. Is the trustee an employee or agent of the management company or institutional partner of the charter school(s) governed by the Education Corporation?  
     Yes ✓ No

If **Yes**, for each school, please provide a description of the position(s) you hold, your responsibilities, your salary and your start date.

4. Identify each interest/transaction (and provide the requested information) that you or any of your immediate family members or any persons who live with you in your house have held or engaged in with the charter school(s) governed by the Education Corporation during the time you have served on the board, and in the six-month period prior to such service. If there has been no such financial interest or transaction, write **None**. Please note that if you answered **Yes** to Questions 2-4 above, you need not disclose again your employment status, salary, etc.

Date(s)	Nature of Financial Interest/Transaction	Steps taken to avoid a conflict of interest, (e.g., did not vote, did not participate in discussion)	Name of person holding interest or engaging in transaction and relationship to yourself

Please write "None" if applicable. Do not leave this space blank.	None		
---	------	--	--

5. Identify each individual, business, corporation, union association, firm, partnership, committee proprietorship, franchise holding company, joint stock company, business or real estate trust, non-profit organization, or other organization or group of people doing business with the school(s) governed by the Education Corporation and in which such entity, during the time of your tenure as a trustee, you and/or your immediate family member(s) or person(s) living in your house had a financial interest or other relationship. If you are a member, director, officer or employee of an organization formally partnered with the school(s) that is/are doing business with the school(s) through a management or services agreement, please identify only the name of the organization, your position in the organization, and the relationship between such organization and the school(s). If there was no financial interest, write **None**.

Organization conducting business with the school(s)	Nature of business conducted	Approximate value of the business conducted	Name of Trustee and/or immediate family member of household holding an interest in the organization conducting business with the school(s) and the nature of the interest	Steps Taken to Avoid Conflict of Interest
Please write "None" if applicable. Do not leave this space blank.				
	None			

Dean Beckford  
Signature

7/11/17  
Date

Please note that this document is considered a public record and as such, may be made available to members of the public upon request under the Freedom of Information Law. Personal contact information provided below will be redacted.

Business Telephone: \_\_\_\_\_

Business Address: \_\_\_\_\_

E-mail Address: \_\_\_\_\_

Home Telephone: \_\_\_\_\_

Home Address: \_\_\_\_\_

<p align="center"><b>Disclosure of Financial Interest by a Current or Proposed Charter School Education Corporation Trustee</b></p>
---

Trustee Name:

Daniel Vos

Name of Charter School Education Corporation (for an unmerged school, this is the Charter School Name):

New York French American Charter School

1. List all positions held on the education corporation board (e.g., president, treasurer, parent representative).

TREASURER

2. Is the trustee an employee of any school operated by the Education Corporation?  
 \_\_\_ Yes X No

If **Yes**, for each school, please provide a description of the position(s) you hold, your responsibilities, your salary and your start date.

3. Is the trustee an employee or agent of the management company or institutional partner of the charter school(s) governed by the Education Corporation?

\_\_\_ Yes X No

If **Yes**, for each school, please provide a description of the position(s) you hold, your responsibilities, your salary and your start date.

4. Identify each interest/transaction (and provide the requested information) that you or any of your immediate family members or any persons who live with you in your house have held or engaged in with the charter school(s) governed by the Education Corporation during the time you have served on the board, and in the six-month period prior to such service. If there has been no such financial interest or transaction, write **None**. Please note that if you answered **Yes** to Questions 2-4 above, you need not disclose again your employment status, salary, etc.

Date(s)	Nature of Financial Interest/Transaction	Steps taken to avoid a conflict of interest, (e.g., did not vote, did not participate in discussion)	Name of person holding interest or engaging in transaction and relationship to yourself



6/1/16 - 12/15/16	Wife of Trustee Please write "None" if applicable. Do not leave this space blank. worked as administrator for school	recused from all discussions related to employment	Chantal Chanel Ups
-------------------	--	--	-----------------------

5. Identify each individual, business, corporation, union association, firm, partnership, committee proprietorship, franchise holding company, joint stock company, business or real estate trust, non-profit organization, or other organization or group of people doing business with the school(s) governed by the Education Corporation and in which such entity, during the time of your tenure as a trustee, you and/or your immediate family member(s) or person(s) living in your house had a financial interest or other relationship. If you are a member, director, officer or employee of an organization formally partnered with the school(s) that is/are doing business with the school(s) through a management or services agreement, please identify only the name of the organization, your position in the organization, and the relationship between such organization and the school(s). If there was no financial interest, write **None**.

Organization conducting business with the school(s)	Nature of business conducted	Approximate value of the business conducted	Name of Trustee and/or immediate family member of household holding an interest in the organization conducting business with the school(s) and the nature of the interest	Steps Taken to Avoid Conflict of Interest
Please write "None" if applicable. Do not leave this space blank.				
None				

Signature

Date

Please note that this document is considered a public record and as such, may be made available to members of the public upon request under the Freedom of Information Law. Personal contact information provided below will be redacted.

Business Telephone:

Business Address:

E-mail Address:

Home Telephone:

Home Address:

**Disclosure of Financial Interest by a Current or Proposed Charter School  
Education Corporation Trustee**

**Trustee Name:**

RICHARD ORTOLI

**Name of Charter School Education Corporation (for an unmerged school, this is the Charter School Name):**

NEW YORK FRENCH AMERICAN CHARTER SCHOOL

1. List all positions held on the education corporation board (e.g., president, treasurer, parent representative). President

2. Is the trustee an employee of any school operated by the Education Corporation?  
☐ Yes ☒ No

If **Yes**, for each school, please provide a description of the position(s) you hold, your responsibilities, your salary and your start date.

3. Is the trustee an employee or agent of the management company or institutional partner of the charter school(s) governed by the Education Corporation?  
☐ Yes ☒ No

If **Yes**, for each school, please provide a description of the position(s) you hold, your responsibilities, your salary and your start date.

4. Identify each interest/transaction (and provide the requested information) that you or any of your immediate family members or any persons who live with you in your house have held or engaged in with the charter school(s) governed by the Education Corporation during the time you have served on the board, and in the six-month period prior to such service. If there has been no such financial interest or transaction, write **None**. Please note that if you answered **Yes** to Questions 2-4 above, you need not disclose again your employment status, salary, etc.

Date(s)	Nature of Financial Interest/Transaction	Steps taken to avoid a conflict of interest, (e.g., did not vote, did not participate in discussion)	Name of person holding interest or engaging in transaction and relationship to yourself
<u>NONE</u>			



Please write "None" if applicable. Do not leave this space blank.			
---	--	--	--

5. Identify each individual, business, corporation, union association, firm, partnership, committee proprietorship, franchise holding company, joint stock company, business or real estate trust, non-profit organization, or other organization or group of people doing business with the school(s) governed by the Education Corporation and in which such entity, during the time of your tenure as a trustee, you and/or your immediate family member(s) or person(s) living in your house had a financial interest or other relationship. If you are a member, director, officer or employee of an organization formally partnered with the school(s) that is/are doing business with the school(s) through a management or services agreement, please identify only the name of the organization, your position in the organization, and the relationship between such organization and the school(s). If there was no financial interest, write **None**.

Organization conducting business with the school(s)	Nature of business conducted	Approximate value of the business conducted	Name of Trustee and/or immediate family member of household holding an interest in the organization conducting business with the school(s) and the nature of the interest	Steps Taken to Avoid Conflict of Interest
Please write "None" if applicable. Do not leave this space blank.				

Signature

Date

Please note that this document is considered a public record and as such, may be made available to members of the public upon request under the Freedom of Information Law. Personal contact information provided below will be redacted.

Business Telephone:

Business Address:

E-mail Address:

Home Telephone:

Home Address:



# Entry 9 BOT Table

Created: 07/25/2017 • Last updated: 08/01/2017

(tab across or use scroll bar at bottom of table)

## 1. Current Board Member Information

	Trustee Name	Email Addresses	Position on the Board	Committee Affiliations	Voting Member Per By-Laws? (Y/N)	Area of Expertise, and/or Additional Role at School (parent, staff member, etc.)	Number of Terms Served and Length of Each (Include election date and term expiration)	Number of Board Mtgs Attended during 2016-17?
1	Richard Ortoli		Chair/ Board President		Yes	Law	5.5	
2	Mason Mallory		Vice Chair/ Vice President	Finance & Facilities	Yes	Accounting	4	
3	Dan Vos		Trustee/Member	Finance & Facilities	Yes	Engineering & Architect	3	
4	Carine Pena		Trustee/Member	Governance	Yes		5	
5	Rebecca Engle		Trustee/Member	Development	Yes		3	
	Dionne		Secret	Educational		Educational		

6	Beckford		ary	Accountability	Yes	ion	3.5	
7	Zohair Ghenaia		Trustee/Member	Finance	Yes		1	
8	Brandi Lilly-McLean		Parent Representative	PTO President	No		2.5	
9	Ghislaine Oudrago-Ametchie		Parent Representative	Parent Rep			2	
10	Francois Petit-Perrin		Other	Teacher Rep			2	
11								
12								
13								
14								
15								
16								
17								
18								
19								
20								

**2. Total Number of Members on June 30, 2016** 8

**3. Total Number of Members Joining the Board 2016-17 School Year** 1

<b>4. Total Number of Members Departing the Board during the 2016-17 School Year</b>	<b>2</b>
<b>5. Number of Voting Members 2016-17, as set by the by-laws, resolution or minutes</b>	<b>7</b>
<b>6. Number of Board Meetings Conducted in the 2016-17 School Year</b>	<b>10</b>
<b>7. Number of Board Meetings Scheduled for the <a href="#">2017-18</a> School Year</b>	<b>13</b>

**Thank you.**



# Entry 10 - Board Meeting Minutes

Created: 07/18/2017 • Last updated: 07/31/2017

---

## [Instructions for submitting minutes of the BOT monthly meetings](#)

Regents, NYCDOE, and Buffalo BOE authorized schools must either provide a link to a complete set of minutes that are posted on the charter school website, or upload a complete set of board meeting minutes from July 2016--June 2017.

**A. Provide a URL link to the** <http://www.nyfacs.net/20162017-board-and-committee-minutes/>  
**Monthly Board Meeting Minutes**  
**which are posted on the School's**  
**web page.**

**OR**

**B. Upload All Monthly Board Meeting Minutes**

Combine into one .PDF file

(No response)



# Entry 11 Enrollment and Retention of Special Populations

Last updated: 07/18/2017

## [Instructions for Reporting Enrollment and Retention Strategies](#)

Describe the efforts the charter school has made in 2016-2017 toward meeting targets to attract and retain enrollment of students with disabilities, English language learners, and students who are economically disadvantaged. In addition, describe the school's plans for meeting or making progress toward meeting its enrollment and retention targets in 2017-2018.

## Recruitment/Attraction Efforts Toward Meeting Targets

	Describe Efforts Toward Meeting Recruitment Targets 2016-17)	Describe Plans Toward Meeting Recruitment Targets 2017-18)
Economically Disadvantaged	We do not accept our students on any criteria. We encourage all students to apply.	We will continue to send direct mail postcards to students in districts 3 and district 5. We will continue to attend charter fairs, community events, faith based organizations and local businesses to recruit students. Our current campaign yielded much success. We are now at capacity ( 300 enrolled students).
English Language Learners		
Students with Disabilities	In our enrollment efforts we specify in our brochure that we do service students with special needs. We provide most Sped Services.	

**Retention Efforts Toward Meeting Targets**

	Describe Efforts Toward Meeting Retention Targets 2016-17)	Describe Plans Toward Meeting Retention Targets 2017-18)
Economically Disadvantaged		
English Language Learners		
Students with Disabilities		



# Entry 12 Classroom Teacher and Administrator Attrition

Last updated: 08/01/2017

Report changes in teacher and administrator staffing.

## Instructions for completing the Classroom Teacher and Administrator Attrition Tables

Charter schools must complete the two tables named 2016-2017 Classroom Teacher and Administrator Attrition to report changes in teacher and administrator staffing in 2016-2017. Please provide the full time equivalent (FTE) of staff on June 30, 2016; the FTE for any departed staff from July 1, 2016 through June 30, 2017; the FTE for added staff from July 1, 2016 through June 30, 2017; and the FTE of staff added in newly created positions from July 1, 2016 through June 30, 2017 using the two tables provided.

### Classroom Teacher Attrition Table

	FTE Classroom Teachers on June 30, 2016	FTE Classroom Teachers Departed 7/1/16 - 6/30/17	FTE Classroom Teachers Filling Vacant Positions 7/1/16 - 6/30/17	FTE Classroom Teachers Added in New Positions 7/1/16 - 6/30/17	FTE of Classroom Teachers on June 30, 2017
	22	4	3	0	21

### Administrator Position Attrition Table

	FTE Administrative Positions on June 30, 2016	FTE Administrators Departed 7/1/16 - 6/30/17	FTE Administrators Filling Vacant Positions 7/1/16 - 6/30/17	FTE Administrators Added in New Positions 7/1/16 - 6/30/17	FTE Administrative Positions on June 30, 2017
	6	1	0	0	5

Thank you





# Entry 13 Uncertified Teachers

Last updated: 08/01/2017

**FTE Count of All Teachers** 21  
**(Certified and Uncertified) as of**  
**June 30, 2017**

**FTE Count of All Certified** 13.5  
**Teachers as of June 30, 2017**

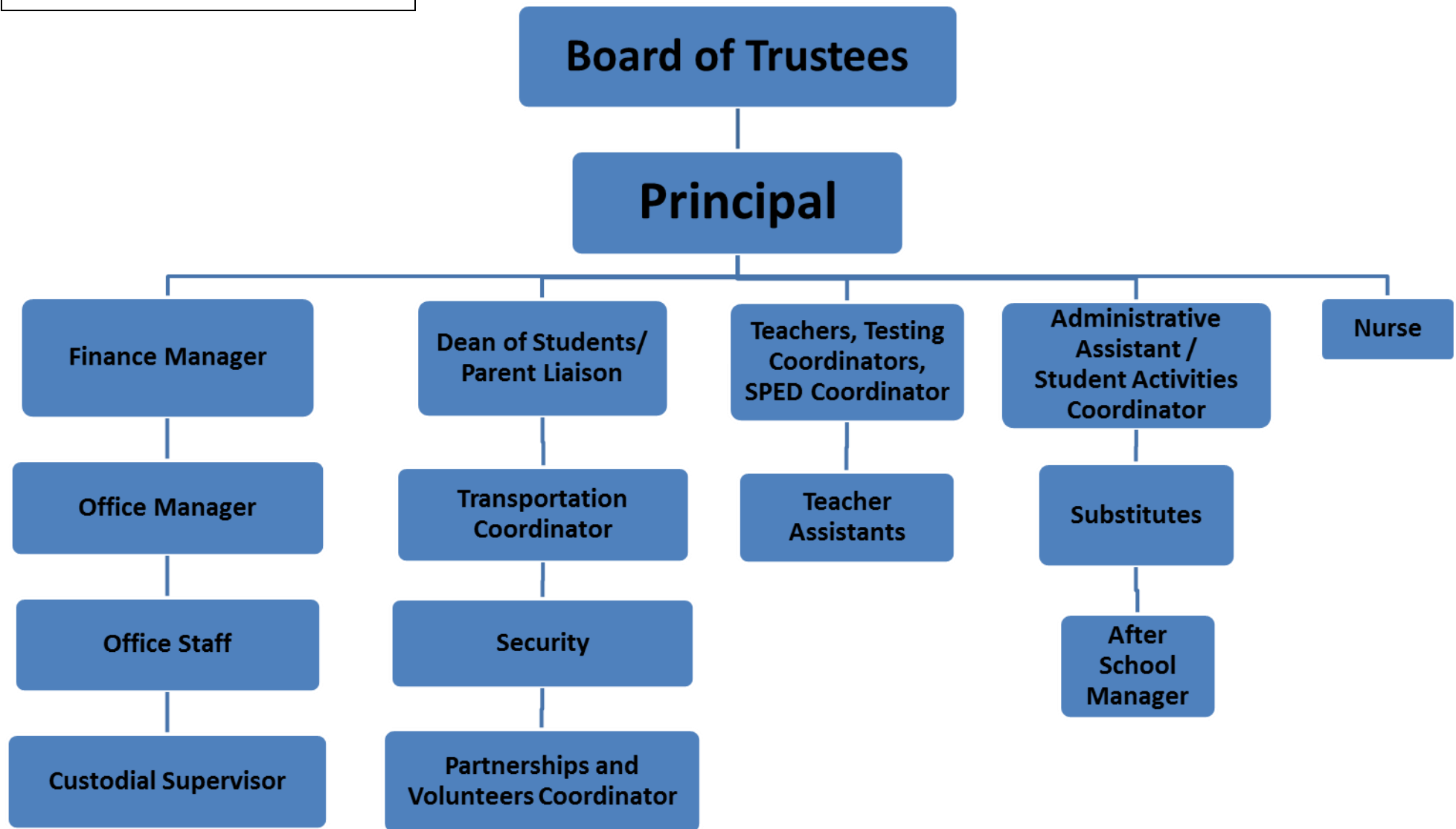
## Instructions for Reporting Percent of Uncertified Teachers

The table below is reflective of the information collected through the online portal for compliance with New York State Education Law 2854(3)(a-1) for teaching staff qualifications. Enter the relevant full time equivalent (FTE) count of teachers in each column. For example, a school with 20 full time teachers and 5 half time teachers would have an FTE count of 22.5. If more than one column applies to a particular teacher, please select one column for the FTE count. Please do not include paraprofessionals, such as teacher assistants.

**FTE count of uncertified teachers on June 30, 2017, and each uncertified teacher should be counted only once.**

1. Total FTE count of uncertified teachers (6-30-17)	8
2. FTE count of uncertified teachers with at least three years of elementary, middle or secondary classroom teaching experience (6-30-17)	6
3. FTE count of uncertified teachers who are tenured or tenure track college faculty (6-30-17)	0
4. FTE count of uncertified teachers with two years of Teach for America experience (6-30-17)	0
5. FTE count of uncertified teachers with exceptional business, professional, artistic, athletic, or military experience (6-30-17)	2
6. FTE count of uncertified teachers who do not fit into any of the prior four categories (6-30-17)	0

**Thank you.**



# New York French American Charter School

## 2017-2018 School Calendar

September 2017						
Su	M	Tu	W	Th	F	Sa
					1	2
3	4	5	6	★7	8	9
10	11	12	13	14	15	16
17	18	19	20	21	22	23
24	25	26	27	28	29	30

15

October 2017						
Su	M	Tu	W	Th	F	Sa
1	2	3	4	5	6	7
8	9	10	11	12	13	14
15	16	17	18	19	20	21
22	23	24	25	26	27	28
29	30	31				

21

November 2017						
Su	M	Tu	W	Th	F	Sa
			1	2	3	4
5	6	7	8	9	10	11
12	13	14	15	16	17	18
19	20	21	22	23	24	25
26	27	28	29	30		

19

December 2017						
Su	M	Tu	W	Th	F	Sa
					1	2
3	4	5	6	7	8	9
10	11	12	13	14	15	16
17	18	19	20	21	22	23
24	25	26	27	28	29	30
31						

16

January 2018						
Su	M	Tu	W	Th	F	Sa
	1	2	3	4	5	6
7	8	9	10	11	12	13
14	15	16	17	18	19	20
21	22	23	24	25	26	27
28	29	30	31			

21

February 2018						
Su	M	Tu	W	Th	F	Sa
				1	2	3
4	5	6	7	8	9	10
11	12	13	14	15	16	17
18	19	20	21	22	23	24
25	26	27	28			

14

March 2018						
Su	M	Tu	W	Th	F	Sa
				1	2	3
4	5	6	7	8	9	10
11	12	13	14	15	16	17
18	19	20	21	22	23	24
25	26	27	28	29	30	31

21

April 2018						
Su	M	Tu	W	Th	F	Sa
1	2	3	4	5	6	7
8	9	10	11	12	13	14
15	16	17	18	19	20	21
22	23	24	25	26	27	28
29	30					

16

May 2018						
Su	M	Tu	W	Th	F	Sa
		1	2	3	4	5
6	7	8	9	10	11	12
13	14	15	16	17	18	19
20	21	22	23	24	25	26
27	28	29	30	31		




22




June 2018						
Su	M	Tu	W	Th	F	Sa
					1	2
3	4	5	6	7	8	9
10	11	12	13	14	15	16
17	18	19	20	21	22	23
24	25	★26	27	28	29	30
31						

16

July 2018						
Su	M	Tu	W	Th	F	Sa
1	2	3	4	5	6	7
8	9	10	11	12	13	14
15	16	17	18	19	20	21
22	23	24	25	26	27	28
29	30	31				

August 2018						
Su	M	Tu	W	Th	F	Sa
			1	2	3	4
5	6	7	8	9	10	11
12	13	14	15	16	17	18
19	20	21	22	23	24	25
26	27	28	29	30	31	

	School Closed
	Early Release Day
	Saturday Academy

	Employee Planning (no school for students)
	Report Cards
	End of Marking Period

 First Day/ Last Day of School

Sep 11-15	DELFT, F&P, Math Assessments
Oct 14	Saturday Academy Begins
Nov 16	Parent Teacher Conference
Dec 25- Jan 2	Winter Recess- (School Closed)
January	Martin Luther King Jr. Day - (School Closed)
Feb 16-23	Winter Recess - (School Closed)
Mar 15	Parent Teacher Conference (1/2 Day)
Mar 30 - Apr 6	Spring Recess
Apr 9 - May 18	NYSESLAT Speaking Exam

Apr 11 - 13	NYS ELA Exams
May 1-3	NYS Math Exams
May 7 - 18	NYSESLAT Listening, Reading & Writing Exams
May 17 - 19	4th Grade Science Exam
June 4	4th Grade Written Science Exam
June 7	Chancellor's Day Staff PD ( School Closed)
June 11	Clerical Day/ Staff PD (School Closed)
June 15	Eid al-Fitr (School Closed)
June 26	Last Day of School (1/2 Day)